

May 2026

Lunate

Lunate ETFs

Launch of Chimera Solactive
GCC Shariah Dividend ETF

STRICTLY PRIVATE & CONFIDENTIAL





Disclaimer

This presentation has been prepared by Lunate Capital Limited and Lunate Capital LLC (together known as “Lunate” and collectively with their affiliates known as “Lunate Group”). Whilst every care has been taken in relation to the accuracy, no warranty is given or implied. The information provided is not investment advice and recipients should consider obtaining independent advice before making any investment decision that relies on this information.

This presentation may contain certain ‘forward-looking’ statements. Such statements reflect current views on, among other things, our markets, activities and prospects. Such ‘forward-looking’ statements can sometimes, but not always, be identified by their reference to a date or point in the future or the use of ‘forward looking’ terminology, including terms such as ‘believes’, ‘estimates’, ‘anticipates’, ‘expects’, ‘forecasts’, ‘intends’, ‘plans’, ‘projects’, ‘goal’, ‘target’, ‘aim’, ‘may’, ‘will’, ‘would’, ‘could’, ‘should’ or similar expressions or in each case their negative or variations or comparable terminology.

By their nature, forward-looking statements involve inherent risks and uncertainties because they relate to future events and circumstances which may or may not occur and may be beyond our ability to control or predict. Therefore, they should be regarded with caution. Important factors that could cause actual results, performance or achievements of Lunate Group to differ materially from any outcomes or results expressed or implied by such forward-looking statements include, among other things, general business and economic conditions globally, industry trends, competition, changes in government and other regulation, including in relation to the environment, health and safety, changes in political and economic stability, changes in occupier demand and tenant default and the availability and cost of finance. Such forward-looking statements should therefore be construed in light of such factors.

Any forward-looking statements made by or on behalf of Lunate Group speak only as of the date they are made, and no representation, assurance, guarantee or warranty is given in relation to them (whether by Lunate or Lunate Group or any of their respective associates, directors, officers, employees or advisers), including as to their completeness, accuracy or the basis on which they were prepared. Other than in accordance with our legal and regulatory obligations, Lunate Group does not intend or undertake to update or revise forward-looking statements to reflect any changes in its expectations with regard thereto or any changes in information, events, conditions or circumstances on which any such statement is based. Neither of Lunate or Lunate Group, nor any of their respective directors, officers, employees, members, partners, shareholders, agents or advisers (collectively, the “Related Persons”) makes any assurance, representation, or warranty as to the accuracy of any projections set forth herein, and they expressly disclaim any and all liability from any errors or omissions related to any information set forth herein.

The presentation and its contents is not, and may not be relied on as, legal, tax, investment, accounting, or professional advice or as an offer to sell or solicitation of an offer to buy interests in funds or interests or securities in any investment vehicle, or any managed account, managed by Lunate. The presentation has not been filed with or approved by any securities administrator, governmental authority, or regulator in any jurisdiction. No governmental or self-regulatory authority will pass an opinion on the merits of the presentation, or the adequacy of the information contained herein. Representations to the contrary would be unlawful.

Republication or redistribution of Lunate Group content, including by training or similar means, is prohibited without the prior written consent of Lunate. No content or any part thereof may be modified, reverse, engineered, reproduced or distributed in any form by any means, without prior written permission of Lunate. The content shall not be used for any unlawful or unauthorized purposes. Lunate and any third-party provider, as well as their directors, officers, shareholders, employees or agents do not guarantee the accuracy, completeness, obtained from the use of the content. Lunate assumes no obligation to update the content following publication in any form or format. The Content should not be relied upon, and Lunate does not guarantee the accuracy and completeness of the information contained and is not a substitute for the skill, judgment and experience of the user, its management, employees, advisors and/or clients when making investment and other business decisions.

The content is provided on an “as is” basis. In no event shall Lunate or any of the Related Persons be liable to any party for any direct, indirect, incidental, exemplary, compensatory, punitive, special or consequential damages, costs, expenses, legal fees, or losses (including without limitation, lost income or lost profits and opportunity costs or losses caused by negligence) in connection with any use of the content even if advised of the possibility of such damages.

All service marks, registered trademarks and registered service marks are the property of their respective owners.

Lunate Capital Limited is duly licensed and regulated by the ADGM Financial Services Regulatory Authority with commercial license number 000001179. Lunate Capital LLC is duly licensed and regulated by the UAE Capital Markets Authority formerly known as “Security and Commodities Authority”.



CONTENTS

1. Investing in ETFs
2. GCC Overview
3. Chimera Solactive GCC Shariah Dividend ETF
4. The Initial Offering Period

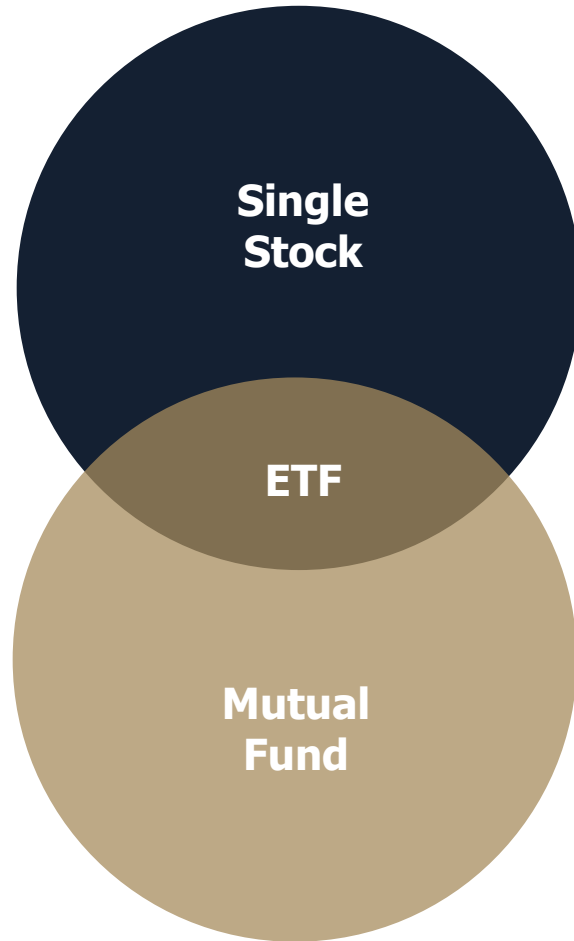
Lunate



1. Investing in ETFs



What is an ETF?



An **ETF**, or Exchange-Traded Fund, is a **passively managed investment vehicle** that trades on the stock market. It tracks the **performance of an underlying index**, providing investors with a simple way to have **diversified exposure** to a broad range of assets through a **single traded security**.



Single Stock



Trades on the **stock market**



Can be **bought/sold** through a broker



Offers **exposure** to a basket of instruments



Live prices during the trading day



Benefits of ETFs

An ETF combines the benefits of a diversified portfolio with the accessibility and tradability of a stock

	ETF	Mutual Fund
Buy/Sell	Can be bought/sold on the stock exchange during trading hours , similar to a stock.	Subscription and redemption are processed only by the fund manager, depending on the periodicity (daily, weekly, monthly or quarterly) determined by the fund manager.
Trading Frequency	You can trade an ETF throughout the day, with prices updating in real-time based on market conditions.	Trades are executed at the fund's end-of-day NAV price.
Transparency of Holdings	Holdings are published daily , providing full transparency of the portfolio. During market hours, an iNAV can be used as a reference price , and is an estimate of the value of the NAV based on live intraday price movements.	Holdings are published periodically, which could be daily, monthly, or quarterly.
Fees	ETFs generally charge a single management fee and incur brokerage commissions during transactions.	Mutual funds may include various fees such as management, custody and potential performance fees. Subscription and redemption charges may also apply.
Performance	Indexed ETFs aim to replicate the performance of a benchmark .	Mutual funds are actively managed, with a risk of underperforming the broader market due to management decisions.
Minimum Investment	ETFs can be purchased in smaller quantities, allowing investors to buy as little as one share , making them more accessible.	Many mutual funds have minimum investment requirements, which could range from a few hundred to several thousand dollars, limiting accessibility for smaller investors.



2. GCC Overview

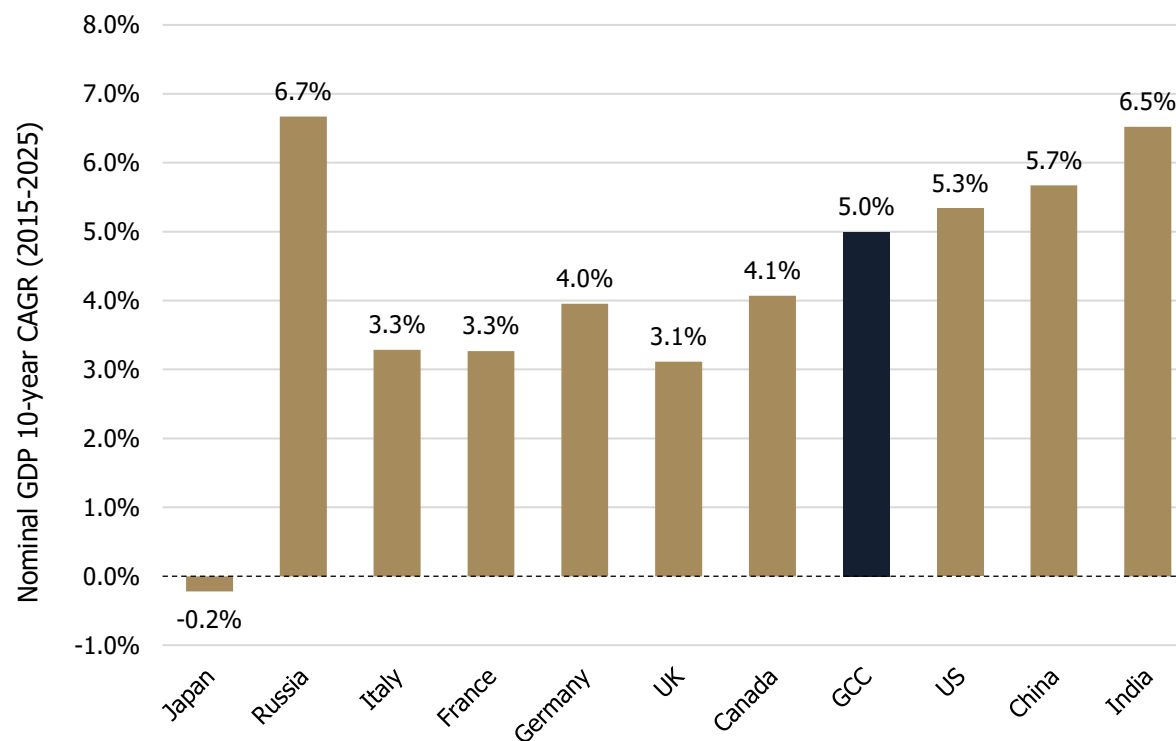


GCC Market Overview

- **Gateway Geography**
Strategically positioned at the crossroads of Asia, Europe and Africa, the GCC serves as a natural hub for global trade, investment flows and cross regional connectivity.
- **World Class Infrastructure** – The region is known for its investment in state-of-the-art infrastructure, from modern **transportation systems and airports** to cutting-edge **business districts** and **residential developments**, underpinning its role as a global hub for commerce, finance and regional connectivity.
- **Favorable Climate for Investment** – The GCC countries offer investor-friendly policies, including up to **100% foreign ownership** in several sectors, **tax incentives**, and **low corporate tax rates**. Free trade zones across the region allow businesses to operate with negligible red tape, making it easier for foreign investors to enter the market.
- **Incentives for Innovation and Technology** – The GCC is investing heavily in developing its knowledge-based economy. With a focus on innovation, technology, and entrepreneurship, the region is becoming a hub for **startups, fintech companies**, and **digital innovation**.

Over the past decade, the GCC region has demonstrated strong economic performance, with its Nominal GDP outperforming most major global economies.

Looking ahead, this momentum is expected to continue, with the GCC projected to achieve a CAGR of 5.4% until 2030, surpassing the G7's forecasted CAGR of 4.1%.





3. Chimera Solactive GCC Shariah Dividend ETF



Chimera Solactive GCC Shariah Dividend ETF – Product Summary

ETF Name	Chimera Solactive GCC Shariah Dividend ETF
Share Class	Distributing – Semi-annually, when available
Investment Objective	The ETF will seek to provide investment returns, before fees and expenses, that reflect the performance of the index
Index Name	Solactive GCC Shariah Dividend Index NTR
Replication Strategy	The ETF will follow Full Replication strategy
Index Description	<p>Solactive GCC Shariah Dividend Index is designed to represent securities from Gulf Cooperation Council (GCC) countries area that meet shariah compliance criteria and exhibits high dividend yield.</p> <ol style="list-style-type: none"> I. Securities with a last twelve months dividend per share greater than zero are eligible. II. Securities with an indicated annual dividend per share greater than zero are eligible. III. Securities that have a settlement cycle above 2 days are ineligible. IV. Each security in the INDEX UNIVERSE is ranked based on their 12M-MOMENTUM, in descending order. The securities ranking in the top 90% are eligible V. All the securities fulfilling the above-mentioned criteria are ranked based on their dividend yield, in descending order. The largest 20 securities are selected. To limit turnover, the following buffer rule is implemented: the largest 15 securities by dividend yield are selected as index components. Eligible securities that are also current index components and rank between 16 and 25 are included until 20 index components are reached.



Chimera Solactive GCC Shariah Dividend ETF – Index Data

Solactive GCC Shariah Dividend Index NTR (SGCCSHDN)

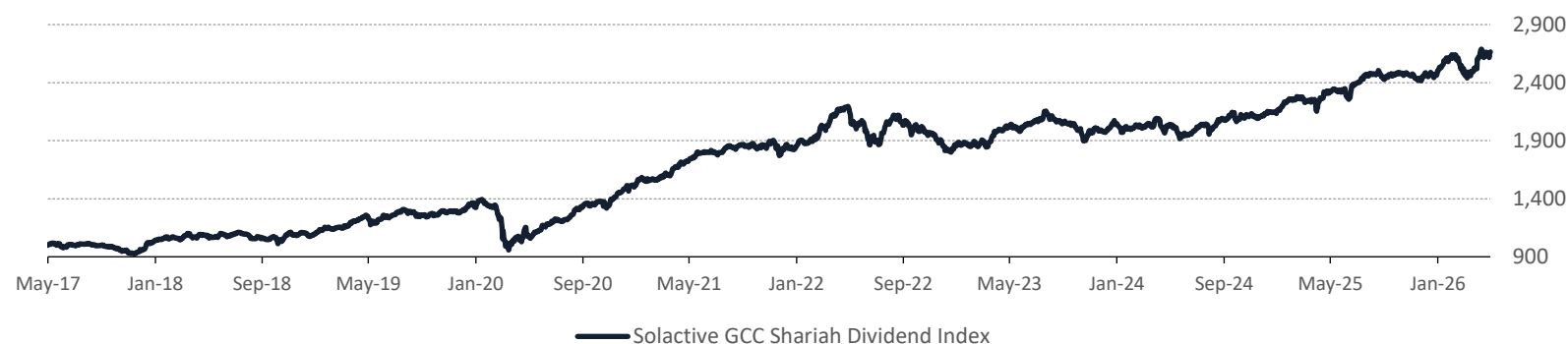
Key Characteristics*

Index Ticker	SGCCSHDN
Index ISIN	DE000SLOQRQ0
Asset Class	Equity
Regional Allocation	Middle East
Index Base Currency	USD
Rebalance Frequency	Annually
Weighting Methodology	Indicative Dividend Yield
Index First Value Date	May 8, 2017

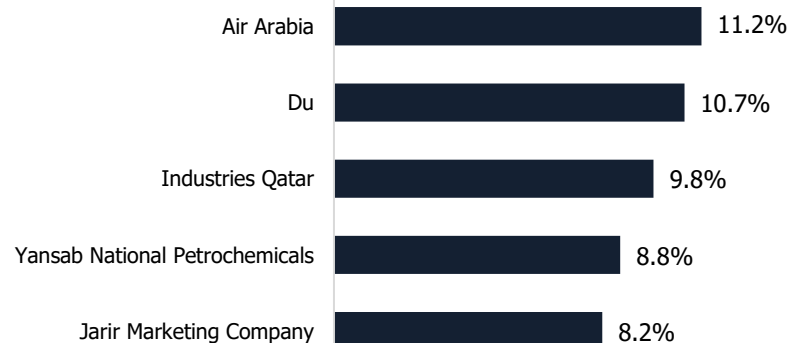
Key Statistics*

Number of Holdings	20
Index Market Cap	\$1.49Tn / AED5.47Tn
Index Implied Liquidity	\$27.9Mn / AED102.4Mn
Price / Earnings (P/E)	15.06x
Price / Book (P/B)	1.75x
Return on Equity (ROE)	12.02%
Dividend Yield (12-month)	6.20%
Annualized Return%**	11.47%

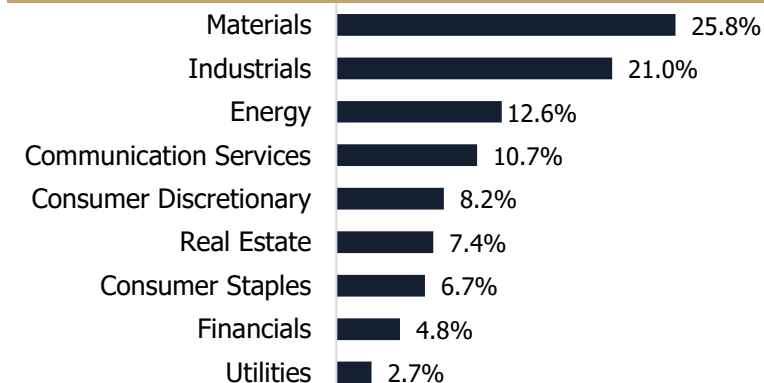
Growth of USD 1,000 since May 2017



Top 5 Holdings*

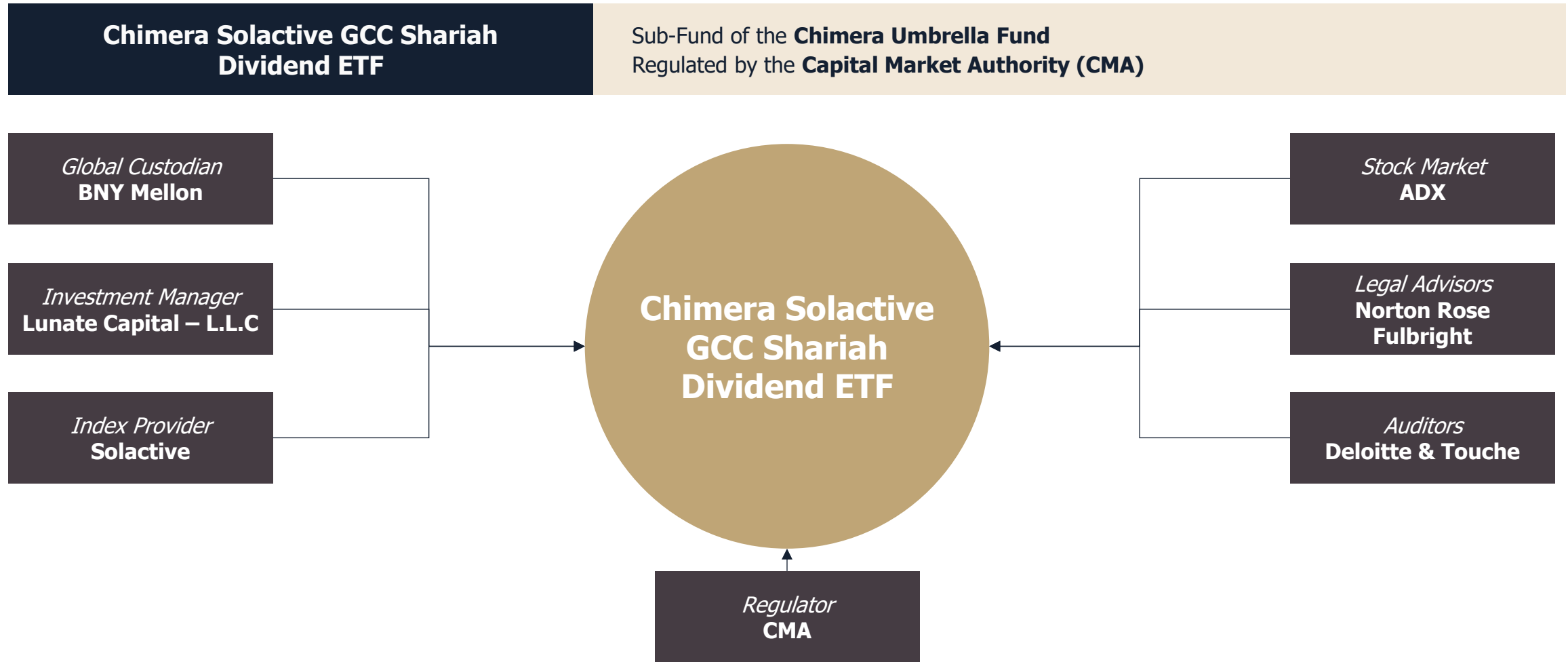


Sector Allocation*





Chimera Solactive GCC Shariah Dividend ETF – Robust, Transparent Legal Structure





4. The Initial Offering Period



The Initial Offering Period – the IOP & Trading the ETF on ADX

ETF Name

Chimera Solactive GCC Shariah Dividend ETF

Ticker
GCCDIV

Share Class
Distributing Semi-annually
(when available)

**Total Expense
Ratio (TER)**
0.50%

Liquidity
Daily, during ADX trading
hours

IOP Price
AED 3.67 + 0.04 issuance
fees

Initial Offer Period
June 8th to June 16th, 2026

Listing on ADX
June 23rd, 2026

**Entry/Exit Fees on
secondary market**
Regular brokerage fees

Trading Hours

Primary Market

10:00 AM to 4:00 PM UAE time

Secondary Market

9:30 AM to 3 PM UAE time



The Initial Offering Period – How to Subscribe in the IOP

ADX

Subscribe directly with as little as AED5,000 through
ADX e-IPO: [Link: e-IPO Portal \(adx.ae\)](http://adx.ae)

ADX / Investors / IPO Subscription / Overview

OVERVIEW

The ADX eIPO Investor Portal allows subscriptions to IPO's. eIPO Investor Portal provides an easy, faster and convenient way to complete the subscription process. An investor having a valid NIN (National Investor Number) and an Active bank account in any one of the UAE banks can apply for the IPO using this eIPO Investor Portal. Investor may also subscribe in the IPO from eIPO Investor Portal or from any of the Receiving Banks participating in the IPO.

1 ADX WOULD LIKE TO FURTHER DRAW ATTENTION TO THE BELOW POINTS (FOR THOSE WHO OPT TO SUBSCRIBE USING THIS PORTAL).

- Investors must read and accept the terms and conditions before making any investment in the IPO.
- The investment in the IPO involves certain risks and may not be suitable for all investors. Investors must be willing to assume the risks associated with any investment in the IPO Portal. The investor may also obtain financial advice from an authorized financial advisor regarding his/her financial position and his/her objectives for investing in this IPO.

2 ADDITIONALLY, KINDLY NOTE THE FOLLOWING FOR FILLING UP THE APPLICATION ONLINE

- Please make sure to fill out all required information fields correctly, accurately, and completely.
- The total exact subscription amount must be transferred to the Subscription Account, displayed at the time of subscription submission. The Account Number will also be sent by ADX via e-mail and/or SMS registered during the Subscription process for easy recall. The fund transfer to this account must be made before the End date of the subscription closure or as per the displayed date and/or mentioned in the prospectus.
- If full subscription payment is not received before the end of the subscription period, your application will NOT be processed.
- For more inquiries about the IPO, please contact ADX at 800ADX (239) or via email on info@adx.ae

[IPO Subscription Portal](#)

Authorized Participants (APs)

Subscribe directly through the following APs:



Lunate

Thank you

